

# El amor brujo

Manuel de Falla

## Introducción y Escena.

Allegro furioso ma non troppo vivo. (♩=132)

Musical score for the first section of 'El amor brujo'. It consists of five staves of music in bass clef, 3/4 time. The first staff contains measures 1-4 with dynamics *f*, *ff*, *f*, and *ff*, and the instruction *sempre simile*. The second staff contains measures 5-8. The third staff contains measures 9-12. The fourth staff contains measures 13-16, including a triplet of eighth notes and a group of four sixteenth notes. The section ends with the instruction *Attacca*.

## En la Cueva. La noche.

1 Tranquillo e misterioso (♩=72)

Musical score for the second section of 'El amor brujo'. It consists of five staves of music in bass clef, 3/4 time. The first staff contains measures 1-4 with dynamics *ppp*. The second staff contains measures 5-8 with dynamics *ppp sempre* and *f dim.*. The third staff contains measures 9-12 with dynamics *p*. The fourth staff contains measures 13-16 with dynamics *mf* and *ff*. The section ends with the instruction *Attacca subito*. There are also two boxes containing the text: '4' and '7'.

Pour enchaîner avec le 4 au cas où la Chanson serait supprimée

Pour enchaîner avec la Chanson

Musical score for the transition section. It consists of two staves of music in bass clef, 3/4 time. The first staff contains measures 17-20 with the instruction *Tempo 2*. The second staff contains measures 21-24 with the instruction *poco rit.*

# Canción del amor dolido.

Allegro (♩=160)

4 3 3 3

*mf*

17 **A**

*mf* *p*

24 *colla voce* *rit.* **B** *a tempo*

*mf* *f* *mf*

32

*mf* *mf*

43 **C**

*mf*

52 **D** *Più mosso*

*f* *f*

56 *rit. colla voce* **E** *a tempo*

*f* *f* *pp*

61 *poco rit.* *Calmo e misterioso* *poco rit.*

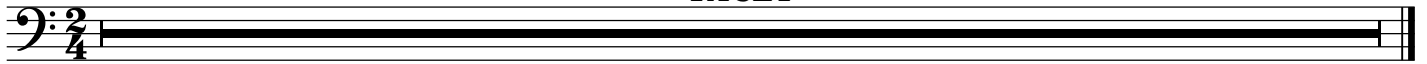
*poco rit.* *Calmo e misterioso* *poco rit.*

attaca subito No.4

# El Aparecido.

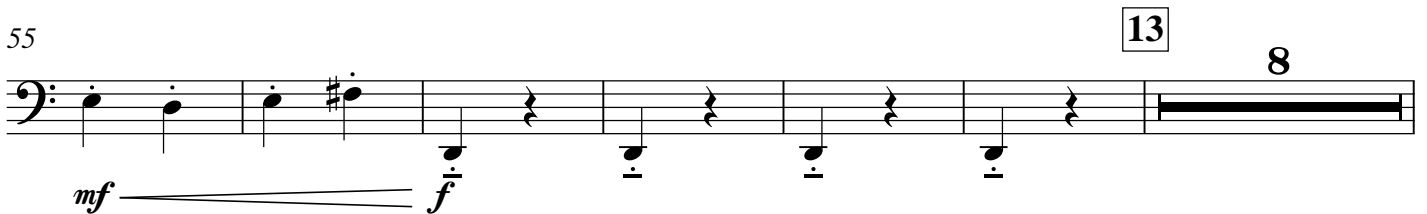
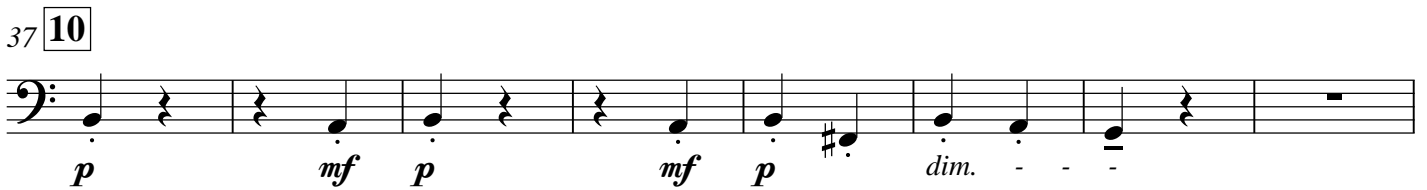
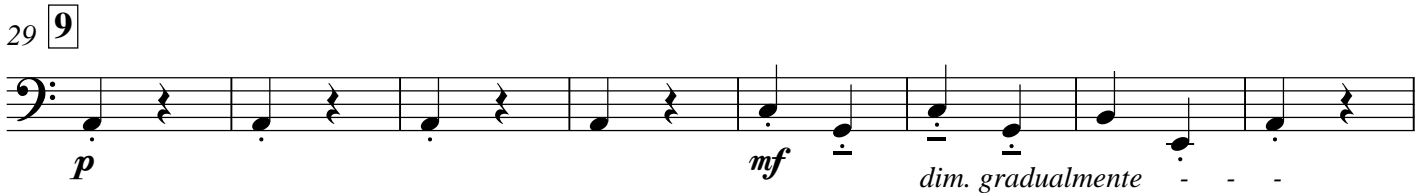
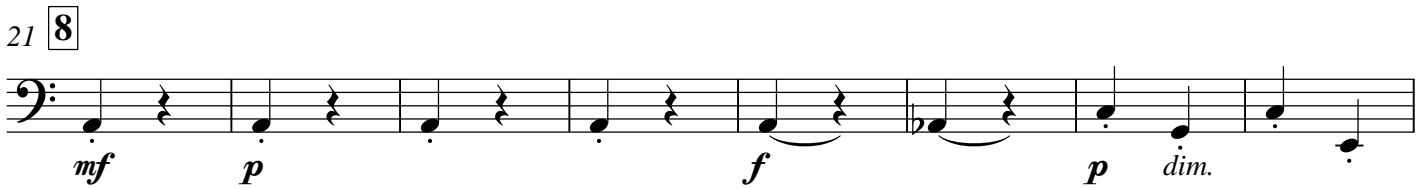
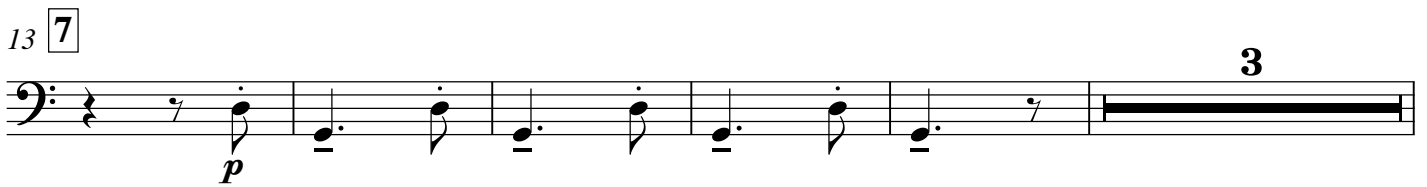
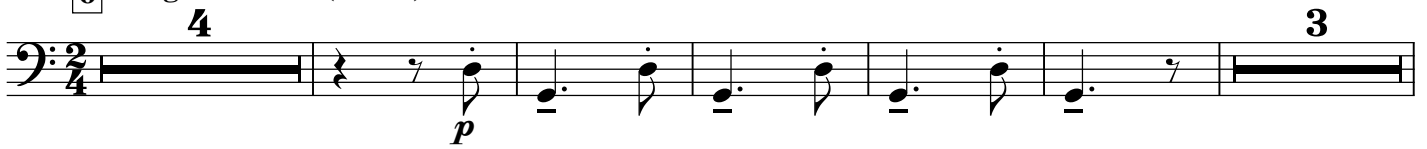
4 Vivo, ma non troppo. (♩=126)

TACET



# Danza del Terror.

6 Allegro ritmico (♩=126)



69 **14**

*sf* *ff* **3**

77 **15**

*f* **3**

85 **16**

*f*

91 **17**

*ff*

97 **18** Poco più vivo

*ff* **3** *ff* **3** *pp* *cresc.* *ff*

103 **19**

*pp* *cresc.* *f* *sf*

109 **20** Furioso. ma ritmico

*pp* *cresc.* *ff* *pp* *cresc.* *ff* *sf*

115 **21**

*ff* **6**

## El Círculo Mágico.

### Romance del Pescador.

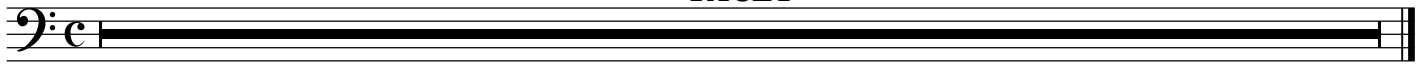
Andante molto tranquillo. (♩=44)

TACET

# A Media noche. Los Sortilegios.

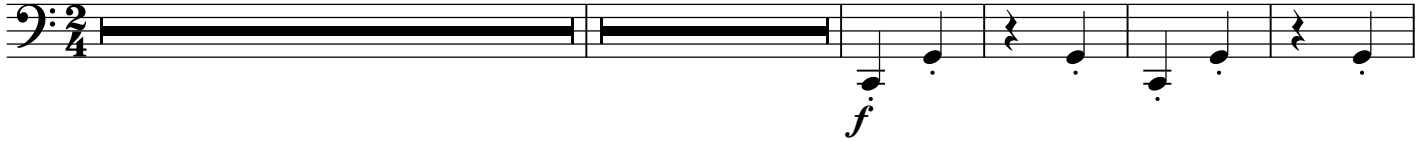
Lento e lontano. (♩=72)

TACET



## Danza ritual del Fuego. (Para ahuyentar los malos espíritus)

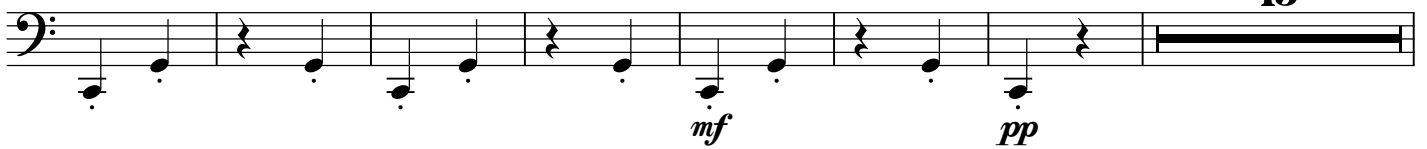
Allegro ma non troppo e pesante (♩=126) 24



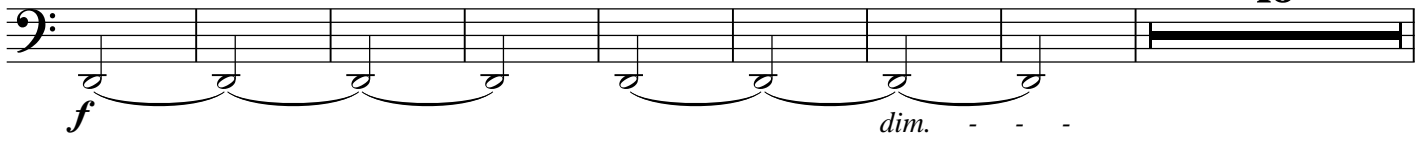
45



53



75



99 27



104



115 28



120



157 **30** **16** **31**

*f*

179

187 **32** **15**

*mf* *pp*

207 **16**

*f* *dim.*

231 **33** Poco a poco affrettando, ma non troppo.

*p cresc.* *f* *mf cresc.*

237

*sf* *sf*

243 **34** Vivo, ma giusto.

*sf* *sf*

248

*ff* *sf*

253 **35**

*ff sempre*

260

267

Escena.

Poco moderato. (♩=69)

TACET

Canción del Fuego fatuo.

Vivo. (♩=69)

TACET

Pantomima.

Allegro. (♩=132)

6

42

11

3

4

9

43

29

4

38 (♩=♩) Andantino tranquillo. (♩=168) **44** a tempo

**18**

*mf* *p* *mf*

60

*mf*

66 *pochissimo rit.* Tempo **5**

*p*

76 Molto tranquillo. (♩=50) **45** (♩=♩) sempre calmo (♩=♩)

**11** **5** **3** **4**

### Danza del Juego de Amor

Allegretto mosso. (♩=60) **46** **47** **48**

**14** **6** **8** **8**

37 **49** **50** **51** (♩=♩)

**8** **14** **4**

63 **52** (♩=♩) **53**

**4**

*p* *p*

75 **54** **55** **56** **57**

**2** **8** **14** **6** **8**

113 **58** **59** **60** Poco meno mosso che (♩=♩) (♩=76) Tempo

**6** **8** **6** **3**



137 **61** Poco più mosso che ♩=♩ (♩=60)

143 **62**

150 **63**

157 poco affrett.

Final. Las campanas del Amanecer.

**64** Allegretto tranquillo (♩=80)

**65**

8 **66**

16 rit. Largamente rit. molto