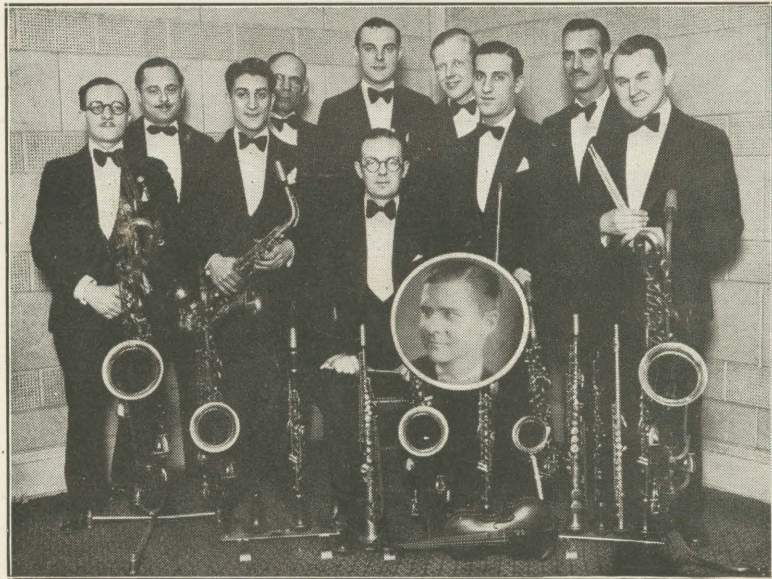


CINDERELLA



CINDERELLA

Words by MAURICE WETZEL

Music by CARLETON COLBY

Moderato

umf

p

Do you re mem - ber long a - go When you were just a tot, Your
Your child - ish mind would pic - ture her Left weep - ing by the fire While

moth - er told you fair - y tales While sit - ting by your cot? A -
at the court her sis - ters danced In fan - ci - ful at - tire, But

mong the yarns she told was one Of which you'd nev - er tire, The
in your heart you knew quite well That ere the break of day, The

poco rit.

sto - ry of the lone - ly lass Who sat bo - side the fire.
fair - y prince would kneel to her And once a - gain would say:-

poco rit.

a tempo *p-mf*

Pret-ty Cin-der-el - la, — Pret-ty Cin-der-el - la, — May-be some-one else is

a tempo *p-mf*

lone - ly too; — Pret-ty Cin-der-el - la, — Pret-ty Cin-der-el - la, — May-be some-one

else is feel - ing blue; — But don't you care, for some hap-py day, — Good

luck, I'm sure, is com-ing your way; — Pret-ty Cin-der-el - la, — Pret-ty Cin-der-el - la, —

— May-'be there's a fair-y Prince for you. — Pret-ty Cin-der- you. —

mf *rit.*

A MESSAGE TO THE HOUSEWIFE

The Cinderella Washer has everything you wanted in an Electric Clothes Washer and at a price far beyond the expectations of the most discriminating buyer.

EFFICIENCY

It washes with the principle of hand washing, the steady pressing motion which sucks the water through the fabric, cleaning thoroughly, yet very gently. No paddles, plungers or perforated baskets,—nothing to catch, pull or break those delicate threads in silks or fine material, thus eliminating those expensive and boresome "runs" so common among hosiery, lingerie, etc. No matter how delicate the material, if you can wash it by hand, you can wash it better in a Cinderella, with a Vacuum agitation.

COMPACTNESS

The "Cinderella" takes up less than one-fourth the space of any large electric washer. It is built to do a fair sized wash in a very small space, being used in the kitchen or bath room as well as the laundry compartment.

It is a miracle of compactness,—it has no awkward corners, no ugly attachments. The "Cinderella" is easily portable, weighing only 17½ pounds complete.

CONSTRUCTION

The outer tub is of pressed steel with a heavy double coat of porcelain enamel. That means you can soak the clothes over night without staining. You also can boil clothes in it on the stove as long as you wish, thus you have a triple purpose tub in one compact space. The inner tub is also pressed steel, of Armco, which will not rust. The motor, a mechanical marvel, is completely protected from water, steam or contact. It is impossible to burn out a fuse. You can run it all day, every day, for years without having to renew it.

APPEARANCE

The top is shining nickel easily kept clean, with a soft cloth. The outer tub comes in any of four clear, beautiful shades, namely, Puritan Ivory, Apple Green, Capri Blue and Chinese Red. The lines are very good. These points summed up as a whole make up a washer First among the leaders in Appearance, Construction and Sales.

PRICE

But finally, of course, the price is hardly short of miraculous, \$47.50 for a well built, capacious, efficient, electric Washer with no attachments to buy, nothing to add to the amazingly low initial cost. Its size and its motor make the cost of operation practically nil,—it costs less than one cent per hour to run. Your current for an entire wash costs less than the soap you use.

You can now understand why every housewife becomes a "Princess" in her home from the very first day she uses a "Cinderella" Washer.

Go to your local dealer, or telephone him at once, he will be pleased to deliver one in your favorite color.

If he cannot supply you, address a few lines to Princess "Cinderella" at the address below, she will be pleased to hear from you. Prompt delivery is assured.

Address: THE CHICAGO CINDERELLA CO., Inc.

2532 Lincoln Avenue, Chicago