

El amor brujo

Manuel de Falla

Introducción y Escena.

Allegro furioso ma non troppo vivo. (♩=132)

Musical score for the first section of 'El amor brujo'. It consists of five staves of music in 3/4 time. The first staff starts with a **ff** dynamic. The second and third staves continue the melodic line. The fourth staff includes the instruction **molto ff**. The fifth staff ends with **dim.**, **p**, and **pp** dynamics, followed by the instruction **Attacca**.

En la Cueva. La noche.

1 Tranquillo e misterioso (♩=72)

2

Musical score for the first part of 'En la Cueva. La noche.'. It consists of two staves. The first staff has a measure rest for 16 measures. The second staff begins with a **f dim.** dynamic and includes a measure rest for 14 measures.

Musical score for the second part of 'En la Cueva. La noche.'. It consists of two staves. The first staff starts with a **3** measure rest, followed by the instruction **Solo** and **dolce marc. espr.**. It features a **f** dynamic and a **poco rit.** instruction. The second staff continues with a **p** dynamic and a **pp** dynamic.

Pour enchaîner avec le 4 au cas où la Chanson serait supprimée

Pour enchaîner avec la Chanson

Musical score for the transition section. It consists of one staff starting at measure 41. It includes a **Tempo** instruction and a **poco rit.** instruction. The staff contains a measure rest for 2 measures.

Attacca No. 4

Attacca subito

Canción del amor dolido.

Allegro (♩=160)

4

Solo 3 3 3 3

f

6

13

Solo 3 3 3 3

f

2

A

4

f

22

3 3

colla voce 3

B a tempo

3 3

f sempre

28

3 3

2

3 3 3 3

6

f sempre

39

3 3 3 3

4

C

7

D Più mosso

6

f sempre

59

E a tempo 2

poco rit. 3

Calmo e misterioso 2

attacca subito No.4

67

Pour terminer avec la Chanson sans enchaîner la suite

poco rit. 5

El Aparecido.

4 Vivo, ma non troppo. (♩=126)

TACET

Danza del Terror.

6 Allegro ritmico (♩=126) **5** Solo *f marc.*

10 **7** *dim.* - - - - - *p* *f marc.*

16 *f*

21 **8** *f* *trm* *mf*

26 **9** *dim. gradualmente* *trm*

32 *trm* *mf* *dim. gradualmente* *trm* **10**

38 **11** *mf* *3* *4* *3*

48 *mf* *dim.*

53 **12** *ff* **13** *8*

69 **14**

ff

Detailed description: Musical staff 69-73. Measure 69 is a whole rest. Measures 70-73 contain a melodic line with eighth notes and slurs. The dynamic is *ff*.

74 **15**

f *dim.* *pp* *f*

Detailed description: Musical staff 74-78. Measures 74-78 contain a melodic line with eighth notes and slurs. The dynamics are *f*, *dim.*, *pp*, and *f*.

79 **2**

Detailed description: Musical staff 79-84. Measures 79-84 contain a melodic line with eighth notes and slurs. Measure 84 ends with a fermata and the number 2.

85 **16**

ff

Detailed description: Musical staff 85-89. Measures 85-89 contain a melodic line with eighth notes and slurs. The dynamic is *ff*.

90 **17**

3

Detailed description: Musical staff 90-96. Measures 90-96 contain a melodic line with eighth notes and slurs. Measure 96 ends with a fermata and the number 3.

97 **18** Poco più vivo

ff **3** *pp* *cresc.*

Detailed description: Musical staff 97-101. Measures 97-101 contain a melodic line with eighth notes and slurs. Measure 97 has a fermata. Measures 98-100 have triplets. Measure 101 ends with a fermata. Dynamics are *ff*, *pp*, and *cresc.*

102 **19**

ff *pp cresc.* *ff* **3**

Detailed description: Musical staff 102-107. Measures 102-107 contain a melodic line with eighth notes and slurs. Measure 102 has a fermata. Measure 107 has a triplet. Dynamics are *ff*, *pp cresc.*, and *ff*.

108

pp cresc. *ff* *pp cresc.*

Detailed description: Musical staff 108-111. Measures 108-111 contain a melodic line with eighth notes and slurs. Measure 108 has a triplet. Dynamics are *pp cresc.*, *ff*, and *pp cresc.*

112 **20** Furioso. ma ritmico **21**

ff *sf* **5** **6**

Detailed description: Musical staff 112-116. Measures 112-116 contain a melodic line with eighth notes and slurs. Measure 112 has a fermata. Measure 113 has a triplet. Measure 114 has a fermata. Measure 115 has a fermata. Measure 116 has a fermata. Dynamics are *ff* and *sf*. Numbers 5 and 6 are placed above the staff.

El Círculo Mágico.

Romance del Pescador.

Andante molto tranquillo. (♩=44)

TACET



A Media noche.

Los Sortilegios.

Lento e lontano. (♩=72)

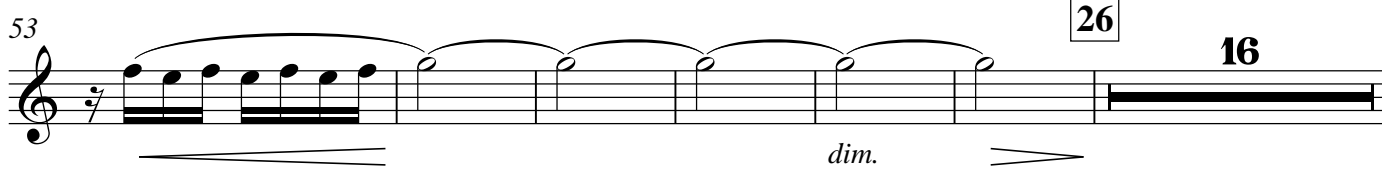
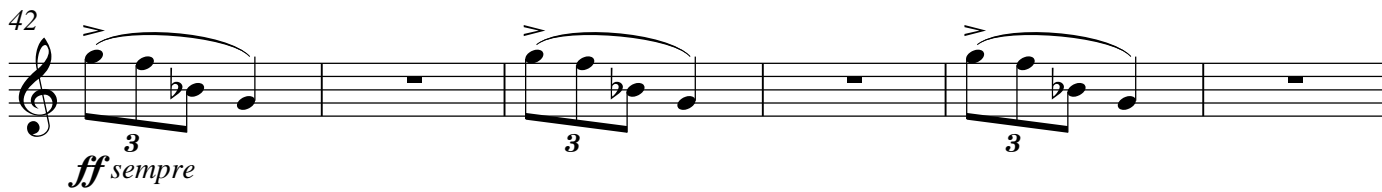
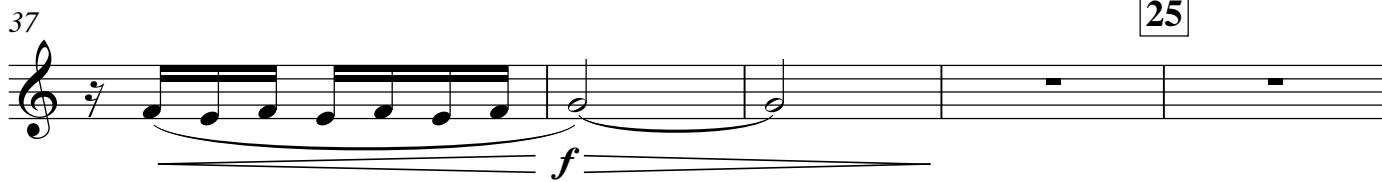
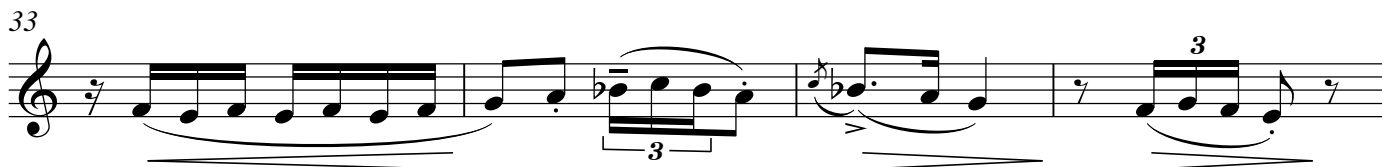
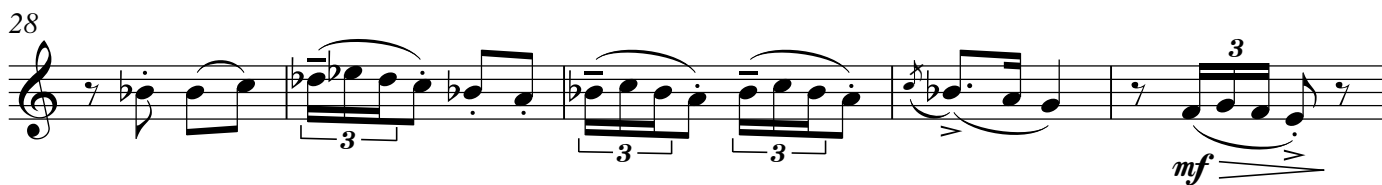
TACET



Danza ritual del Fuego.

(Para ahuyentar los malos espíritus)

Allegro ma non troppo e pesante (♩=126) 24



75 **16**
f *dim.*

99 **27**
tr *pp* *ff* *pp* *ff*

106 Solo
mf

113 **28**
pp *ff*

119 *pp* *ff* *mf*

125 **10** **29** **20** Solo **30**
f marc.

158

163 *mf*

168 **31**
f

174 *ff sempre*

Detailed description: This page of a musical score for Oboe/English Horn contains measures 75 through 174. The score is written in treble clef with a key signature of one sharp (F#). It features various dynamics including fortissimo (f), fortissimo piano (pp), fortissimo (ff), mezzo-forte (mf), and fortissimo sempre (ff sempre). Performance instructions include 'Solo', 'tr' (trill), and 'f marc.' (f marcato). Measure numbers 27, 28, 29, and 30 are boxed. Rehearsal marks 10, 20, and 31 are also present. The music includes slurs, ties, and triplet markings.

180

f 3

185

32

sf *dim.*

16

207

f *dim.*

16

Poco a poco affrettando, ma non troppo.

231

33

p cresc. *f* *mf cresc.* *sf*

238

sf *mf*

34 Vivo, ma giusto.

244

mf *f* *ff*

252

ff

257

35

ff sempre

265

ff

2

Escena.

Poco moderato. (♩=69)

Solo

f

3 5

Detailed description: This system shows the beginning of the 'Escena.' section. It starts with a treble clef and a 3/4 time signature. The tempo is 'Poco moderato' with a quarter note equal to 69 beats per minute. The key signature has one sharp (F#). The music begins with a rest, followed by a series of eighth notes with slurs and accents. There are triplet and quintuplet markings. A dynamic marking of *f* (forte) is present. The system ends with a fermata over a half note.

4

Allegro. (♩=100) Tempo I.

3

p

morendo

Detailed description: This system continues the 'Escena.' section. It starts with a treble clef and a 3/4 time signature. The tempo changes to 'Allegro' with a quarter note equal to 100 beats per minute, and the marking 'Tempo I.' is present. The music consists of eighth notes with slurs and accents. A dynamic marking of *p* (piano) is shown. A 'morendo' (diminuendo) hairpin is indicated. The system ends with a fermata over a half note.

10

36

4

Solo

f

3 5

Detailed description: This system continues the 'Escena.' section. It starts with a treble clef and a 3/4 time signature. The tempo is 'Allegro' with a quarter note equal to 100 beats per minute. The music begins with a rest, followed by eighth notes with slurs and accents. There are triplet and quintuplet markings. A dynamic marking of *f* (forte) is present. The system ends with a fermata over a half note.

16

5

morendo

Detailed description: This system continues the 'Escena.' section. It starts with a treble clef and a 3/4 time signature. The music consists of eighth notes with slurs and accents. A quintuplet marking is present. A 'morendo' (diminuendo) hairpin is indicated. The system ends with a fermata over a half note.

Canción del Fuego fatuo.

Vivo. (♩=69)

TACET

Detailed description: This system is a TACET, indicated by a solid black bar across the staff. The tempo is 'Vivo' with a quarter note equal to 69 beats per minute. The key signature has two sharps (F# and C#). The time signature is 3/8.

Pantomima.

Allegro. (♩=132)

ff

Detailed description: This system begins the 'Pantomima.' section. It starts with a treble clef and a 3/4 time signature. The tempo is 'Allegro' with a quarter note equal to 132 beats per minute. The music consists of eighth notes with slurs and accents. A dynamic marking of *ff* (fortissimo) is present.

6

42

p

Detailed description: This system continues the 'Pantomima.' section. It starts with a treble clef and a 3/4 time signature. The music consists of eighth notes with slurs and accents. A dynamic marking of *p* (piano) is shown. A box containing the number 42 is placed above the staff. The system ends with a fermata over a half note.

11

mf *f* *cresc.* *sempre*

Detailed description: This system continues the 'Pantomima.' section. It starts with a treble clef and a 3/4 time signature. The music consists of eighth notes with slurs and accents. Dynamic markings include *mf* (mezzo-forte), *f* (forte), *cresc.* (crescendo), and *sempre* (sempre). The system ends with a fermata over a half note.

15 43

ff *p* *f* *p*

9

Detailed description: Musical staff starting at measure 15. It features a series of eighth notes with accents and slurs. Dynamic markings are *ff*, *p*, *f*, and *p*. A box containing the number 43 is at the end of the staff. A fermata is placed over the final measure, with the number 9 below it.

29 (♩=♩) Andantino tranquillo. (♩=168) 44 a tempo

2 6 18

mf

Detailed description: Musical staff starting at measure 29. It contains rests of 2, 6, and 18 measures. A key signature change to one sharp (F#) occurs at measure 33. The tempo marking is '(♩=♩) Andantino tranquillo. (♩=168) 44 a tempo'. The dynamic marking is *mf*.

57

p

Detailed description: Musical staff starting at measure 57. It contains a series of eighth notes with slurs. The dynamic marking is *p*.

63

mf *p*

Detailed description: Musical staff starting at measure 63. It contains a series of eighth notes with slurs. Dynamic markings are *mf* and *p*.

69 **pochissimo rit.** **Tempo** **Molto tranquillo. (♩=50)**

5

Solo

dolce e molto espres.

Detailed description: Musical staff starting at measure 69. It contains rests of 5 measures. The tempo markings are 'pochissimo rit.', 'Tempo', and 'Molto tranquillo. (♩=50)'. A 'Solo' marking is present. The dynamic marking is 'dolce e molto espres.'.

78 **poco rubato**

f cresc. 3

Detailed description: Musical staff starting at measure 78. It contains a series of eighth notes with slurs. The marking is 'poco rubato'. The dynamic marking is 'f cresc.' followed by a triplet of 3 notes.

82 **poco rit.** **a tempo, ma calmo**

dolce espres. *morendo*

Detailed description: Musical staff starting at measure 82. It contains rests followed by eighth notes with slurs. The tempo markings are 'poco rit.' and 'a tempo, ma calmo'. The dynamic markings are 'dolce espres.' and 'morendo'.

87 45 (♩=♩) **sempre calmo**

4 3 4

Detailed description: Musical staff starting at measure 87. It contains rests of 4, 3, and 4 measures. A box containing the number 45 is at the beginning. The tempo marking is '(♩=♩) sempre calmo'.

Danza del Juego de Amor

Allegretto mosso. (♩=60)

14 46 6 47 8 48 8 49 8

45 Solo 50

dolce espres.

52

pp

59 51 (♩=♩) 2 La musique imprimée en petites notes doit remplacer la partie vocale dans l'exécution au concert. 52 (♩=♩) 6

69 Solo *tr* 53 *tr* 5

p *f* 8

77 54 *tr* 55 4

p *f* 8

89 Solo *dolce*

95 56 5

105 Solo 57 *dolciss.*

110 58 (muta in Cor. Ingl.) 59 8 *poco*

Poco meno mosso che ♩=♩ (♩=76)

(Cor. Ingl.)

127 **60** La musique imprimée en petites notes doit remplacer la partie vocale dans l'exécution au concert.

dolce molto espr. 5 *con espressione sempre crescente*

poco rit. **Tempo** *muta in Oboe*

Poco più mosso che ♩=♩ (♩=60)

61 8 **62** 8 **63** (Oboe) *f*

poco affrett. *f* 2

Final. Las campanas del Amanecer.

64 Allegretto tranquillo (♩=80)

p 3 3 3 3 3 3 3 3

65 *mf*

cresc. *f*

66 *f sempre* *rit.*

67 *Largamente* *rit. molto* *cresc.* *fff*